

you can
Canon

LASER ALL-IN-ONE

LaserBase MF5770

PRINT - FAX - SCAN - COPY - NETWORK

LaserBase MF5750

PRINT - FAX - SCAN - COPY

LaserBase MF5730

PRINT - SCAN - COPY

Professional and productive,
all-in-one solutions.



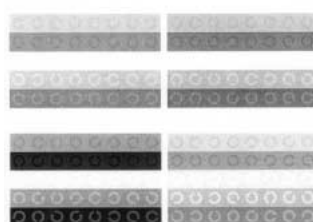

**UEFA
CHAMPIONS
LEAGUE**
OFFICIAL SUPPLIER



High speed and compact.

Canon's LaserBase range lets you print, scan, copy, and more - all from one unit.

You don't need to clutter your office with machines for every occasion - with Canon's range of LaserBase MF5770, LaserBase MF5750, and LaserBase MF5730 you can do all your high quality printing, scanning and copying from one device. These compact units save you space, hassle and money. The LaserBase MF5770 and LaserBase MF5750 can also send and receive faxes, while the LaserBase MF5770 can connect straight into your network. There's a LaserBase to suit all your needs.



Original

Copy

PROFESSIONAL QUALITY LASER PRINTING AND COPYING

Having all of your office needs in one unit doesn't mean compromising on the quality of output. Capable of printing at 1200 x 600 dpi (enhanced), each LaserBase All-In-One produces perfect quality results, every time. LaserBase Digital copying provides a full range of copying options: two documents can be copied onto a single sheet, multiple copies can be generated from a single scan, and with flatbed copying, different sized documents can be easily reproduced onto A4.



50-page ADF

HIGH SPEED, BIG CAPACITY

Each LaserBase prints and copies at a super quick 20 pages per minute. You can start printing immediately as there is virtually no warm-up time with Canon's On-Demand Fixing technology. A USB2.0 Hi-Speed interface speeds up data transfer between your LaserBase and your PC. The 50-page ADF (Automatic Document Feeder) means there's no need to split up large documents for scanning and copying. And with the 250-sheet paper cassette capacity, you'll spend less time handling paper refills.

ADVANCED SCANNING TECHNOLOGY

The colour scanner in the LaserBase MF5770, LaserBase MF5750 and LaserBase MF5730 uses CCD technology to produce high resolution 1200 x 2400 dpi images, and offers all the features you'd expect, including scanning to PDF or email and increased scanning depth of 48/24 bits for greater colour accuracy. Documents or photos can be scanned perfectly and with maximum detail.



All-in-One cartridge

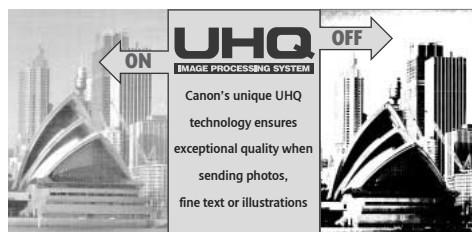
SIMPLE TO USE AND MAINTAIN

Setting up your LaserBase is a breeze with a single software installation - one unit, one cable. With the All-In-One cartridge there is no hassle when you have to change the toner, and because all of the essential parts are also contained in the cartridge, every time it's replaced your LaserBase is as good as new, assuring you of continuous high quality output. The need for machine servicing is essentially eliminated.

A SUPERIOR FAX

With the LaserBase MF5770 and LaserBase MF5750 you also benefit from a versatile fax machine, for a truly complete multifunctional. The built-in Super G3 modem transmits at 3 seconds per page*, cutting communication costs. Ultra High Quality (UHQ) technology - with 256 grey tones and Edge Enhancement - ensures exceptional transmission quality. A huge fax memory saves your incoming messages in case toner or paper runs out - or you can send your messages from memory. You can even send faxes electronically from your PC, saving you paper and toner and what's more, the received fax has the quality of a printed document.

* Based on ITU-T Standard Chart No.1



CONNECT TO YOUR NETWORK

The LaserBase MF5770 provides built-in network connectivity, so everyone in your office can easily share productive printing resources - direct from each networked PC. The Remote User Interface allows users to view the machine status from their workstations, and administrators can change settings from a central point. Network connectivity can be optionally installed in the LaserBase MF5750 and LaserBase MF5730 through an AXIS 1650 Print Server.



network connectivity through the optional AXIS 1650 Print Server:
LaserBase MF5750 / LaserBase MF5730



built-in network connectivity:
LaserBase MF5770



Specifications for LaserBase MF5770 / MF5750 / MF5730

Machine type Available functions	Laser flatbed All-In-One MF5770: Print, Scan, Fax and Copy + Network MF5750: Print, Scan, Fax and Copy MF5730: Print, Scan and Copy	PC INTERFACE & SOFTWARE Interface type Software	USB2.0 Hi-Speed
Paper scanning type Body colour	Flatbed and Automatic Document Feeder Grey	Supported OS PC FAX TX (MF5770 & MF5750 only) PC FAX RX (MF5770 & MF5750 only) Printer drivers Scan drivers Scan to E mail Other features	Windows 98/ME/2000/XP Yes No Yes Yes Yes Scan to PDF, Scan to OCR
PRINTER FUNCTIONS Printing method Print speed Print resolution Printer Memory Cartridges Yield Smoothing (dpi) Paper capacity Paper Size Printing width Toner saver mode	Mono laser beam printing 20 pages per minute 600 x 600 dpi 64MB EP-27 Cartridge 2500 pages (based on 5% print coverage) 1200 x 600 dpi 250 sheets A4, LTR, LGL, Envelope (COM10, Monarch, DL, ISO-5) 216mm Yes (Cartridge yield - approx 3125 pages)	Number of languages Bundled Software Network option (MF5750 & MF5730 only)	Yes Yes Yes Yes English, French, German, Italian, Spanish, Dutch, Russian Presto!PageManager, ScanSoft OmniPage SE Yes (AXIS 1650)
FAX FUNCTION (MF5770 & MF5750 ONLY) Standalone fax PC fax Transmission speed Modem speed Compression method Fax resolution Image processing system Halftone Automatic document feeder Memory transmission FAX memory Memory back up Dual access One touch dials Coded dials Group dial Redial Answering machine hook up Remote reception Sequential broadcast Error correction mode (ECM) Memory reception Polling	Yes (MF5770 & MF5750 only) Yes (TX only) approx. 3 secs per page ¹ Super G3 33.6Kbps MH, MR, MMR, JBIG Standard, Fine, Super Fine, Ultra Fine UHQ 256 grey scale 50 pages Yes 256 pages 1 (4MB) Yes (duration - 3 minutes) Yes 11 100 110 Yes Yes Yes Yes (max 112 destinations) Yes Yes Yes (Reception only)	NETWORK FEATURES (MF5770 ONLY) Type Connection Type Network Protocols Others	Ethernet (10BaseT/100BaseT) RJ45 TCP/IP (DHCP, BOOTP, RARP, ICMP, DNS, Fixed Address) RUI (Remote User Interface)
SCANNER FUNCTIONS Scanner type Automatic document feeder Scanner resolution Colour scanning depth Greyscale gradation Compatibility Effective scanning width OCR bundle Other features	Colour flatbed CCD Yes 1200 x 2400 dpi 48bit/24bit (in/Out) 8bit TWIN, WIA 216mm Yes Dust and Scratch removal, Scan to Email, Scan to PDF	GENERAL FEATURES Number of language (LCD message) Dimensions without trays Dimensions with trays Installation space including trays Weight Power Source Consumption Acoustic Noise Levels	15 languages (English, German, French, Spanish, Italian, Swedish, Norwegian, Dutch, Finnish, Danish, Portuguese, Slovenian, Czech, Hungarian, Russian) 486mm x 416.3mm x 442.4mm (W x D x H) 486mm x 477mm x 508.8mm (W x D x H) 486mm x 762mm (WxD) approx. 14kg AC 200-240V, 50-60Hz Max: 650W Standby: 21W Power save: 14W Standby: 30dB(A) max Copy: under 58dB(A) max
COPIER FUNCTIONS Copy resolution Copy modes Copy speed Multiple copy Zoom ratio First copy output time(FCOT) Other features	600 x 600 dpi Text, Photo, Text & Photo 20 copies per minute Up to 99 copies 50-200% approx. 14 seconds 2-in-1 copy	SYSTEM REQUIREMENTS Software Operating System	Windows 98/Me/2000/XP 65MB of available hard disk space (150MB is recommended) 64MB RAM (128MB is recommended) 128MB RAM (256MB is recommended) for USB2.0 Hi-Speed
		OPTIONS Items	AXIS 1650 Network Print Server

¹ Based on ITU-T Standard Chart No.1
Some images are simulated for clarity of reproduction. All data is based on Canon's standard testing methods. This leaflet and the specifications of the product have been developed prior to the date of product launch. Final specifications are subject to change without notice.™ and ®: All company and/or product names are trademarks and/or registered trademarks of their respective manufacturers in their markets and/or countries.



* for LaserBase MF5770 & MF5750 only.

you can
Canon

Canon Inc
www.canon.com

Canon Europa N.V.
www.canon-europe.com

Canon (UK) Ltd
Woodhatch
Reigate
Surrey
RH2 8BF
Tel 08705 143723
www.canon.co.uk

